

2017 American Community Survey Data Wheel

First, select a geography level

State

Congressional District

Metropolitan Statistical Area

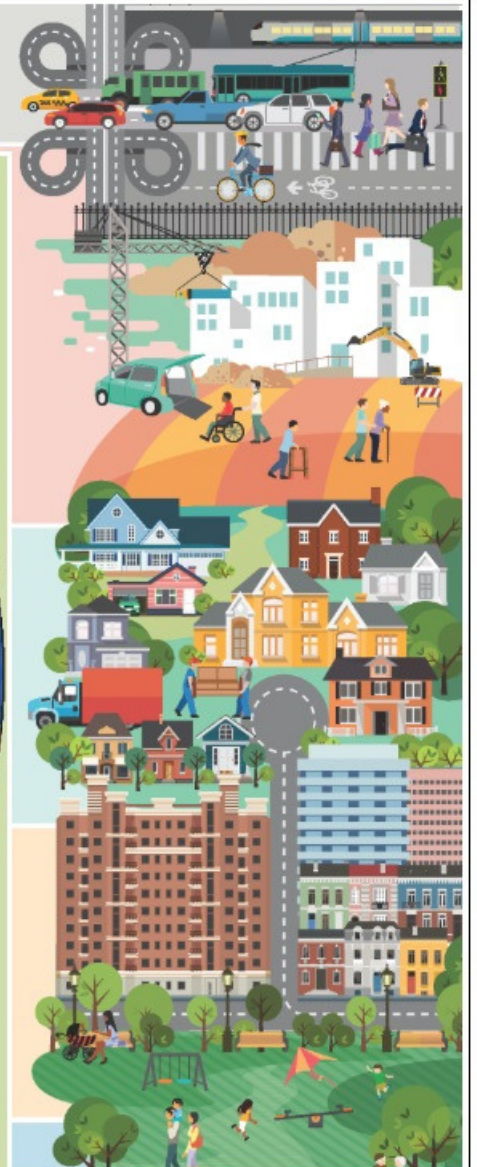


Second, select a state

Virginia

Third, select a metro area

Richmond, VA Metro Area



| | | | | | |
|---------------|-------------|---|-----------|---|---|
| United States | 325,719,178 | ▶ | 1,301,540 | ◀ | Total population |
| | 38.1 | ▶ | 38.8 | ◀ | Median age |
| | 217,600 | ▶ | 237,900 | ◀ | \$ Median home value |
| | 60,336 | ▶ | 67,633 | ◀ | \$ Median household income |
| | 13.4 | ▶ | 11.2 | ◀ | % Below poverty |
| | 13.7 | ▶ | 7.4 | ◀ | % Foreign born |
| | 88.0 | ▶ | 90.0 | ◀ | % High school graduate or higher |
| | 8.7 | ▶ | 8.6 | ◀ | % Without health insurance |
| | 83.5 | ▶ | 85.0 | ◀ | % Households with a broadband Internet subscription |

AMERICAN COMMUNITY SURVEY

The U.S. Census Bureau—
*Measuring America's People,
Places, and Economy*

Source: U.S. Census Bureau,
2017 American Community Survey (ACS),
1-Year Estimates.

For additional statistics, visit

[census.gov](https://www.census.gov)
[#ACSdata](https://www.census.gov/acsdata)

Connect with us @uscensusbureau.



U.S. Department of Commerce
Economics and Statistics Administration
U.S. CENSUS BUREAU
[census.gov](https://www.census.gov)

WWW.RVACOUNTS2020.COM
CENSUS2020@RICHMONDGOV.COM

